

**MANUAL**

MOUNTING – DISMOUNTING

ASSEMBLING – DISASSEMBLING  
INSTRUCTION

TECHNICAL  
INFORMATION

**ET-W-D**  
**ET-W-DB**  
**ET-W-B**



# DSI SERVICE – TEAM

## Sales Department DSI Hamm

Sabine Groneberg  
DSI Hamm Germany, Austria, Switzerland  
Phone: +49 (0) 23 85 772 212  
E-Mail: groneberg@dsi-group.net

Sandra Leszynsky  
Western Europe and UK, USA, Australia, Asia  
Phone: +49 (0) 23 85 772 214  
E-Mail: leszynsky@dsi-group.net

Katrin Poth  
France, Spain, Portugal  
Phone: +49 (0) 23 85 772 215  
E-Mail: poth@dsi-group.net

Iryna Matyak  
Eastern Europe  
Phone: +49 (0) 23 85 772 216  
E-Mail: matyak@dsi-group.net

## Sales Department DSI International

CL2  
Joost Samyn  
Sales Representative  
Western Europe  
Molenbergstraat 15  
1700 Dilbeek  
Belgium  
Phone: +32 24 52 70 55  
Mobil: +32 49 134 39 00  
E-Mail: samyn@dsi-group.net

DSI UK  
Jeff Garrity  
Service Centre  
c/o Pegler Yorkshire  
ST Catherine's Avenue  
Doncaster, South Yorkshire  
DN4 8DF  
United Kingdom  
Phone: +44 13 02 560 190  
Mobil: +44 78 02 346 664  
E-Mail: garrity@dsi-group.net

Keg Service  
Tadeusz Gonciarczyk  
Sales Representative  
Eastern Europe  
UL. Walowa 3  
51-523 Wroclaw  
Poland  
Phone: +48 71 34 66 632  
Mobil: +48 50 51 54 152  
E-Mail: biuro@keg-service.pl

OJA  
Olaf Jakob  
Sales Representative  
Germany, Austria, Switzerland  
Wortmannsweg 14  
44149 Dortmund  
Germany  
Phone: +49 (0) 231 22 50 740  
Fax: +49 (0) 231 22 50 741  
E-Mail: o.j.a@t-online.de

## QUALITY AND SAFETY



Dear customer,

please study this manual thoroughly. Incorrect assembly or disassembly may damage the fitting and can cause harm to product or person.

Specialised sealing systems made of high-grade materials are in daily utilisation with all our types of extractor tubes. Due to continuous improvement of our technology we are able to equip all D-type and S-type systems with a five-year warranty.

# LIST OF CONTENTS

1. Mounting Instruction
2. Dismounting Instruction
3. Disassembling Instruction
4. Assembling Instruction
5. Tool List
6. Technical Information
7. Connection
8. Spare parts Taprite

# MOUNTING INSTRUCTION

## EXTRACTOR TUBE ET-W-D / ET-W-DB / ET-W-B

### 1. Mounting Instruction

ET-W-D



ET-W-DB



ET-W-B



# MOUNTING INSTRUCTION

EXTRACTOR TUBE ET-W-D / ET-W-DB / ET-W-B

Fig. 01



1. Moisten the extractor tube with water.

Fig. 02



2. Check the keg neck is clean. Clean the keg neck from any contaminations.

Fig. 03



3. Check the sealing ring is not damaged and is positioned correctly.

# MOUNTING INSTRUCTION

## EXTRACTOR TUBE ET-W-D / ET-W-DB / ET-W-B

Fig. 04



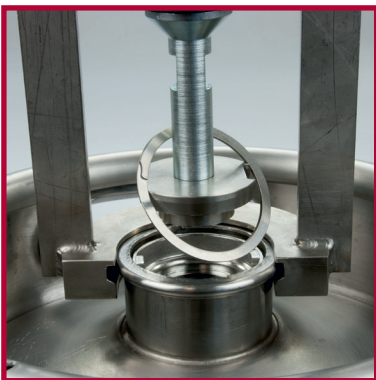
4. Insert the extractor tube straight. Align the two outside lugs of the extractor body with the two gaps in the top of the keg neck.

Fig. 05



5. Turn the extractor tube clockwise until it is locked in the keg neck.

Fig. 06

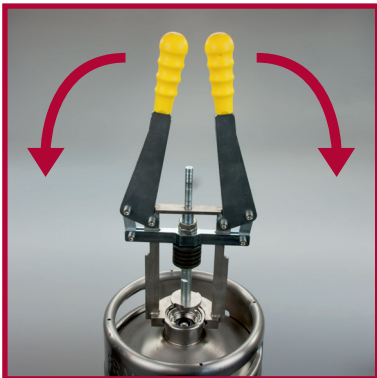


6. Put the ring segment of the DSI mounting tool around the keg neck. Put the retaining ring on the pressure piece of the mounting tool as illustrated. Align the slots in the pressure piece of the mounting tool with the lugs on the extractor tube body, e.g. by rotating the complete tool.

# MOUNTING INSTRUCTION

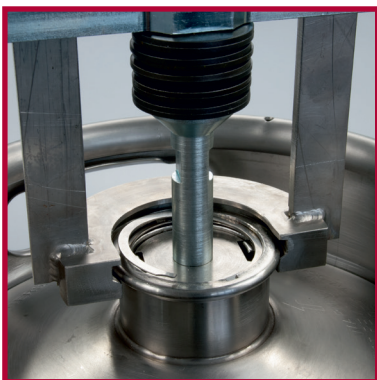
EXTRACTOR TUBE ET-W-D / ET-W-DB / ET-W-B

Fig. 07



10. Press the extractor tube into the keg neck by rotating the handles of the mounting tool to horizontal position.

Fig. 08



11. Feed the retaining ring gradually into the groove of the keg neck. Make sure that the retaining ring has totally sprung back fully into the groove.

Fig. 09



12. Rotate the handles of the mounting tool to vertical position and take the tool off. The keg is ready for use now.



# DISMOUNTING INSTRUCTION

## EXTRACTOR TUBE ET-W-D / ET-W-DB / ET-W-B

### 2. Dismounting Instruction

ET-W-D



ET-W-DB



ET-W-B



# DISMOUNTING INSTRUCTION

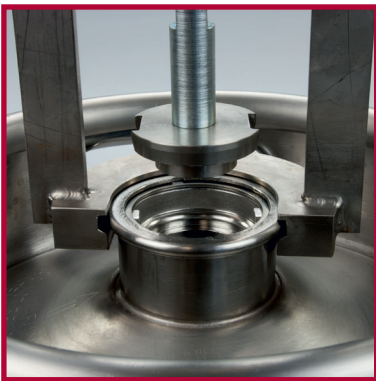
## EXTRACTOR TUBE ET-W-D

Fig. 10



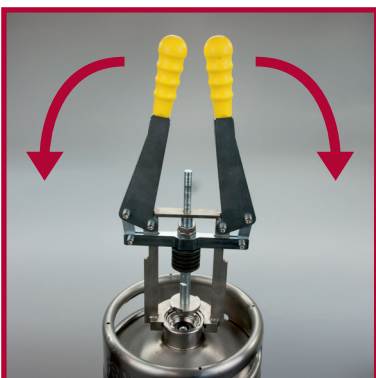
1. Decompress the keg, e.g. by means of the DSI decompression and removal tool.

Fig. 11



2. Put the ring segment of the DSI mounting tool around the keg neck. Align the slots in the pressure piece of the mounting tool with the lugs on the extractor tube body, e.g. by rotating the complete tool.

Fig. 12

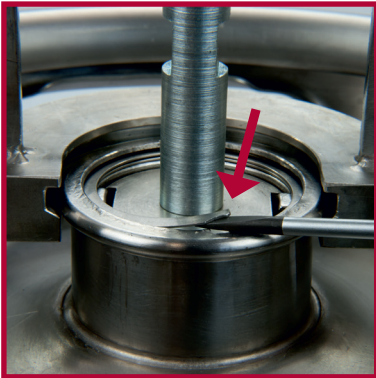


3. Press the extractor tube into the keg neck by rotating the handles of the mounting tool to horizontal position.

# DISMOUNTING INSTRUCTION

## EXTRACTOR TUBE ET-W-D

Fig. 13



4. Take the last turn from the retaining ring with the DSI removal tool and wrench it out of the groove of the keg neck. Rotate the handles of the mounting tool to vertical position and take the tool off.

Fig. 14



5. Remove the extractor tube from the keg by lifting it and rotating it clockwise until the extractor tube can be taken out.

**DO NOT RE-USE THE CIRCLIP/RETAINING RING!**

# DISMOUNTING INSTRUCTION

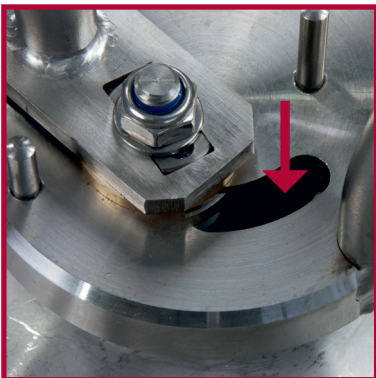
## EXTRACTOR TUBE ET-W-DB / ET-W-B

Fig. 15



1. Decompress the keg, e.g. by means of the DSI decompression and removal tool.

Fig. 16



2. Place the circlip removal tool flat and with open handles (against detention pin) on the kegneck. Rotate the tool until the opening of the circlip is visible through the curved slot (shown Fig. 09).

Fig. 17



3. Close the handles until detention pin. The right side of the circlip will rise. Rotate the complete tool with closed handles about 270° in clockwise direction until the circlip is released from the keg-neck.

# DISMOUNTING INSTRUCTION

## EXTRACTOR TUBE ET-W-DB / ET-W-B

Fig. 18



4. Open the handles (until detention pin). Remove the tool from the kegneck.

Fig. 19



5. Remove the extractor tube from the keg by lifting it and rotating it clockwise until the extractor tube can be taken out.

**DO NOT RE-USE THE CIRCLIP/RETAINING RING!**

# DISASSEMBLING INSTRUCTION

## EXTRACTOR TUBE ET-W-D / ET-W-DB / ET-W-B

### 3. Disassembling Instruction

ET-W-D



ET-W-DB

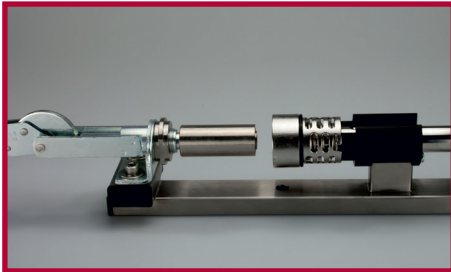


ET-W-B

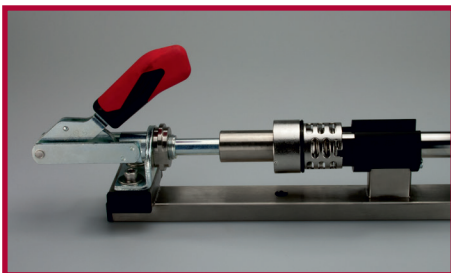


# DISASSEMBLING INSTRUCTION

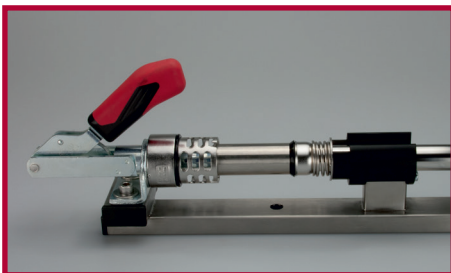
## EXTRACTOR TUBE ET-W-D / ET-W-DB / ET-W-B



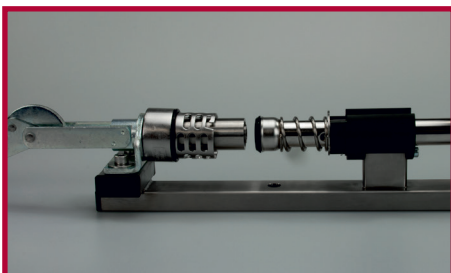
1. Put the extractor tube in the tool. Make sure that the pin of the tool fit into the hole in the bottom of the extractor tube plate.



2. Pull the handle forward to compress the spring. Pull the body downwards and turn it anticlockwise until it is unlocked.



3. Move the body upwards and connect it to the tool by turning the body 90°.



4. Push the handle backward. Take the subassy out. Take the body off.



5. Take off the remaining parts. The extractor tube is disassembled.

# ASSEMBLING INSTRUCTION

## EXTRACTOR TUBE ET-W-D / ET-W-DB / ET-W-B

### 4. Assembling Instruction

ET-W-D



ET-W-DB



ET-W-B



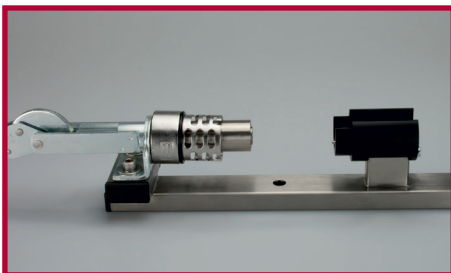


# ASSEMBLING INSTRUCTION

## EXTRACTOR TUBE ET-W-D / ET-W-DB / ET-W-B



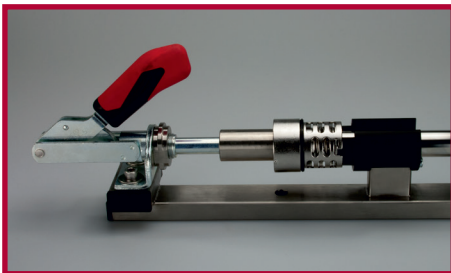
1. Replace the sealing ring on the body and the main seal. Assemble all parts.



2. Connect the body to the assembling tool. Put the subassy in the tool. Make sure that the pin of the tool fit into the hole in the bottom of the extractor tube plate. Push the safety latch slightly inwards.



3. Pull the handle forward to compress the spring.



4. Pull the body downwards and turn it clockwise until it is locked to the extractor tube plate. Make sure that the safety latch sticks through the big opening in the body.



5. Push the handle backward in order to tension the spring and take out the extractor tube. Please check the correct positions of the seals and the safety latch.

# TOOLS

## EXTRACTOR TUBE ET-W-D / ET-W-DB / ET-W-B

### 5. Tool List

ET-W-D



ET-W-DB



ET-W-B



# TOOLS

## EXTRACTOR TUBE ET-W-D / ET-W-DB / ET-W-B



1. Decompression tool by DSI:  
ET-W-DB: part number 026826.8  
ET-W-B: part number 026826.8  
ET-W-D: part number 026826.8

Decompression tool by Taprite:  
ET-W-DB: part number 47-0008-00  
ET-W-B: part number 47-0008-00  
ET-W-D: part number 47-0008-00



2. Retaining ring removal tool by DSI:  
ET-W-DB: part number: 027369.1  
ET-W-B: part number: 027369.1

Spring removal tool by Taprite:  
ET-W-DB: part number: 48-0125-00  
ET-W-B: part number: 48-0125-00



3. Extractor tube mounting tool by DSI:  
ET-W-DB: part number 027349.3  
ET-W-B: part number 027349.3  
ET-W-D: part number 027349.3

Extractor tube mounting tool by Taprite:  
ET-W-DB: part number 48-0129-00  
ET-W-B: part number 48-0129-00  
ET-W-D: part number 48-0129-00

# TOOLS

## EXTRACTOR TUBE ET-W-D / ET-W-DB / ET-W-B



### 1. Demounting tool by DSI:

ET-W-DB: part number 027389.1

ET-W-B: part number 027389.1

ET-W-D: part number 027386.7

### Demounting tool by Taprite:

ET-W-DB: part number 48-0126-00

ET-W-B: part number 48-0126-00

ET-W-D: part number 48-0126-00



### 2. Retaining ring removal tool

(standard screwdriver):

ET-W-D: part number: 027468.1



### 3. Assembling/Disassembling tool by DSI:

ET-W-DB: part number 027410.9

ET-W-B: part number 027410.9

ET-W-D: part number 027466.1

### Assembling/Disassembling tool by Taprite:

ET-W-DB: part number 48-0127-00

ET-W-B: part number 48-0127-00

ET-W-D: part number 48-0127-00

TECHNICAL INFORMATION  
EXTRACTOR TUBE ET-W-D / ET-W-DB / ET-W-B



6. Technical Information

ET-W-D



ET-W-DB

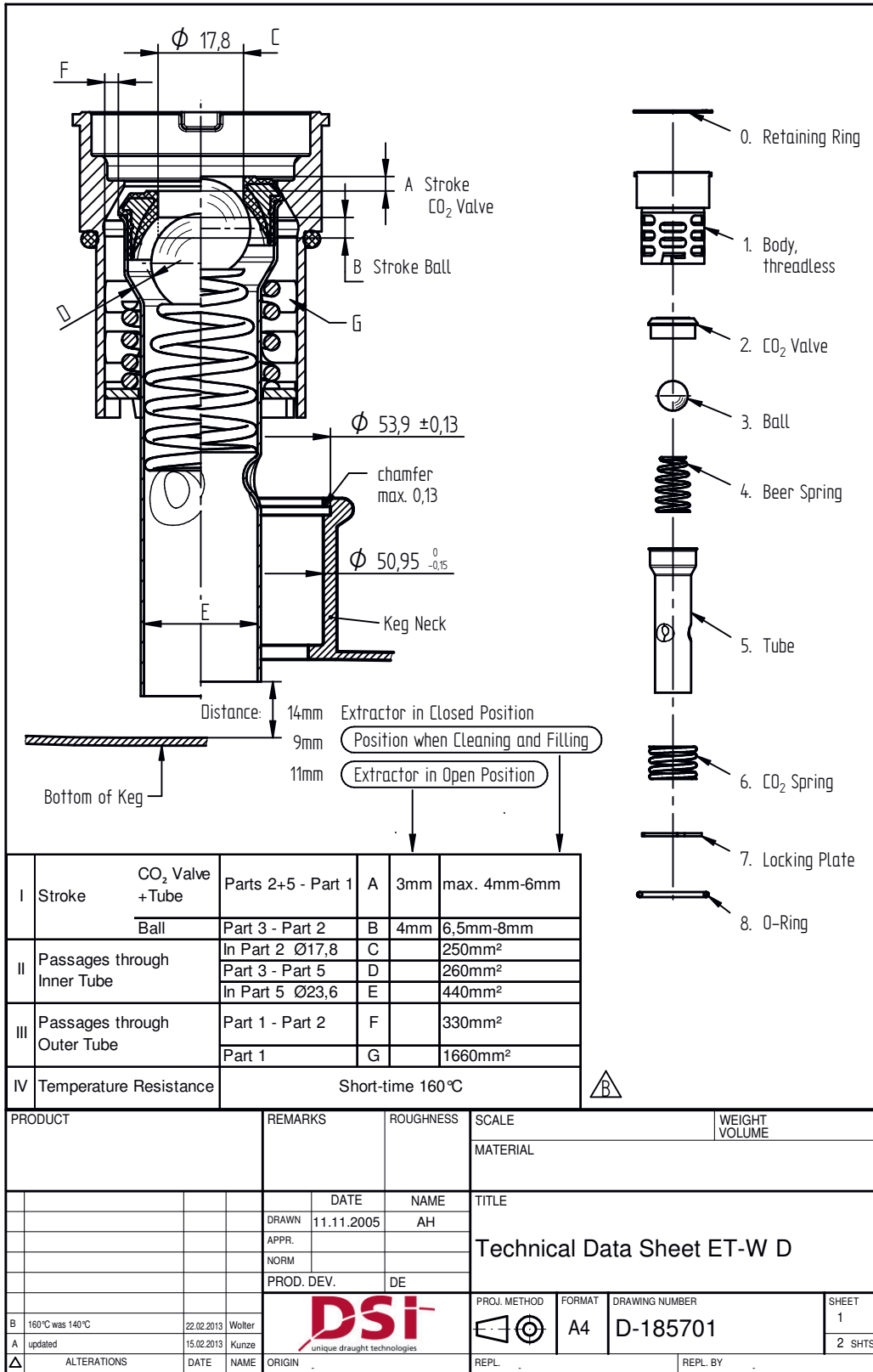


ET-W-B



# TECHNICAL INFORMATION

## EXTRACTOR TUBE ET-W-D

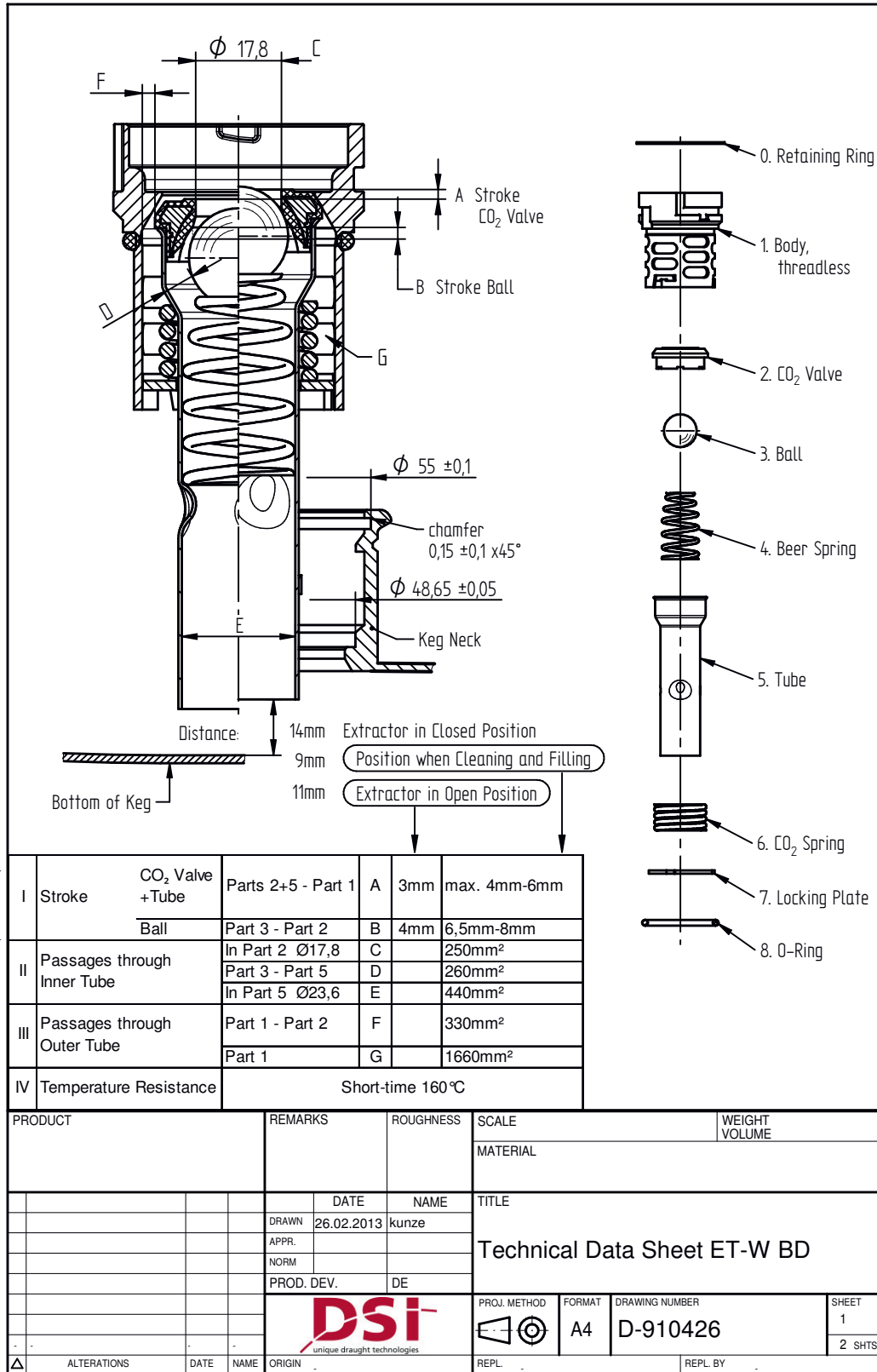


DSI Getr nkearmaturen GmbH  
 If in doubt, please ask.  
 Samples are required after each revision.

This drawing is the property of Dispense Systems International.  
 The information is confidential and should not be copied for  
 any other purpose without the prior written permission of

# TECHNICAL INFORMATION

## EXTRACTOR TUBE ET-W-DB

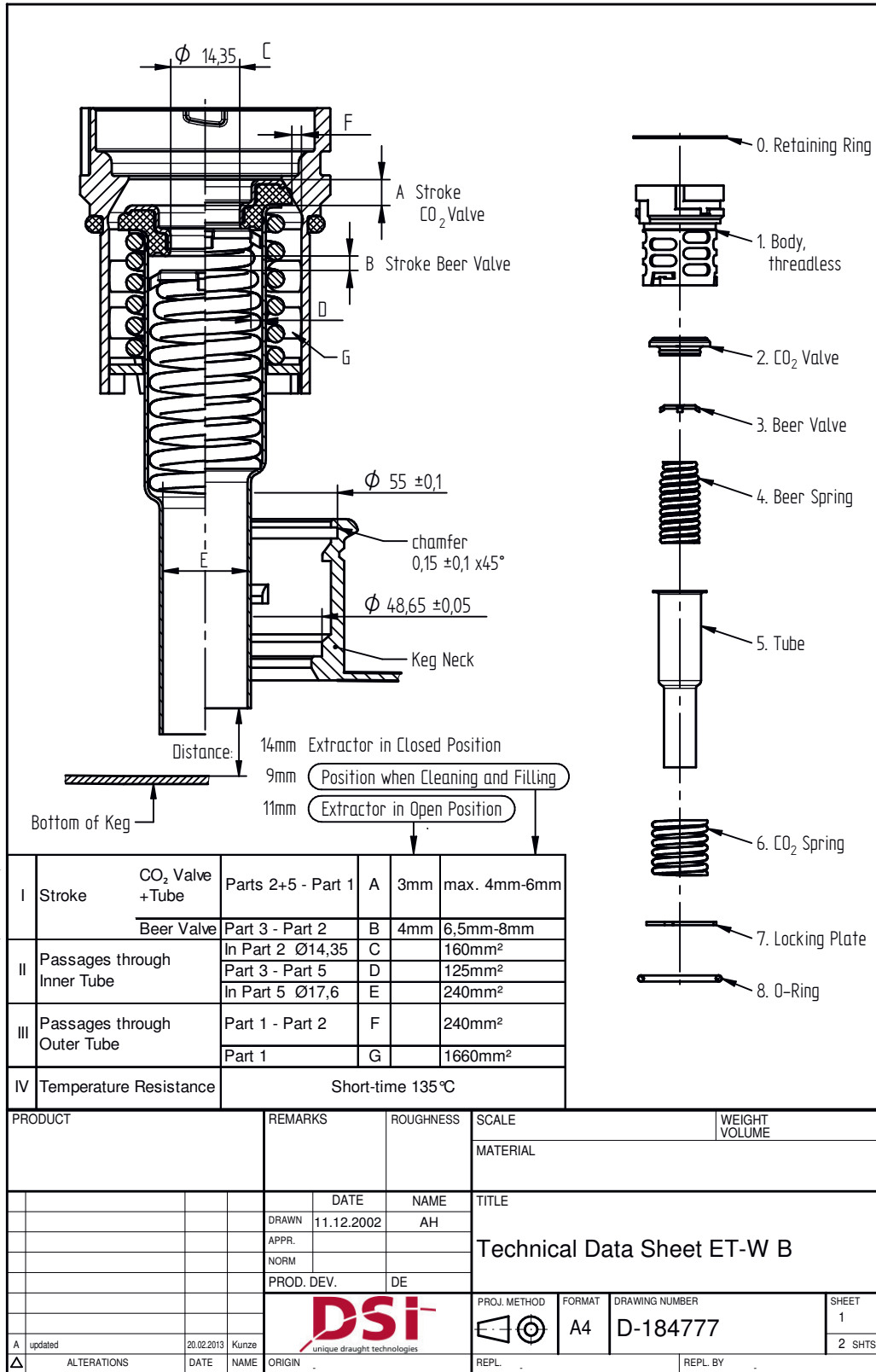


DSI Getränkemaschinen GmbH.  
 If in doubt, please ask.  
 Samples are required after each revision.

This drawing is the property of Dispense Systems International.  
 The information is confidential and should not be copied for  
 any other purpose without the prior written permission of

# TECHNICAL INFORMATION

## EXTRACTOR TUBE ET-W-B





# CONNECTION

EXTRACTOR TUBE ET-W-D / ET-W-DB / ET-W-B

## 6. Connection

ET-W-D



ET-W-DB

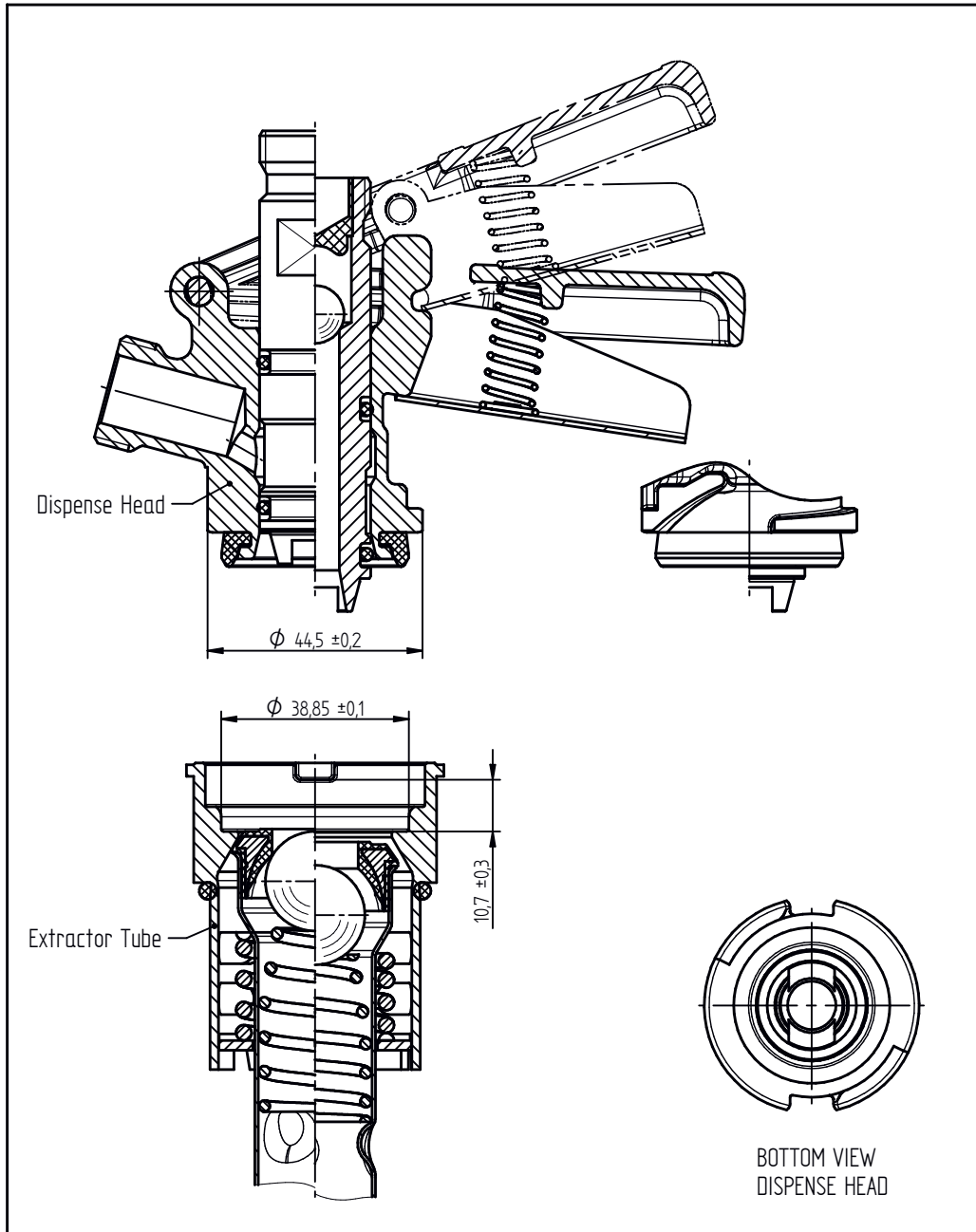


ET-W-B





# CONNECTION

## EXTRACTOR TUBE ET-W-D



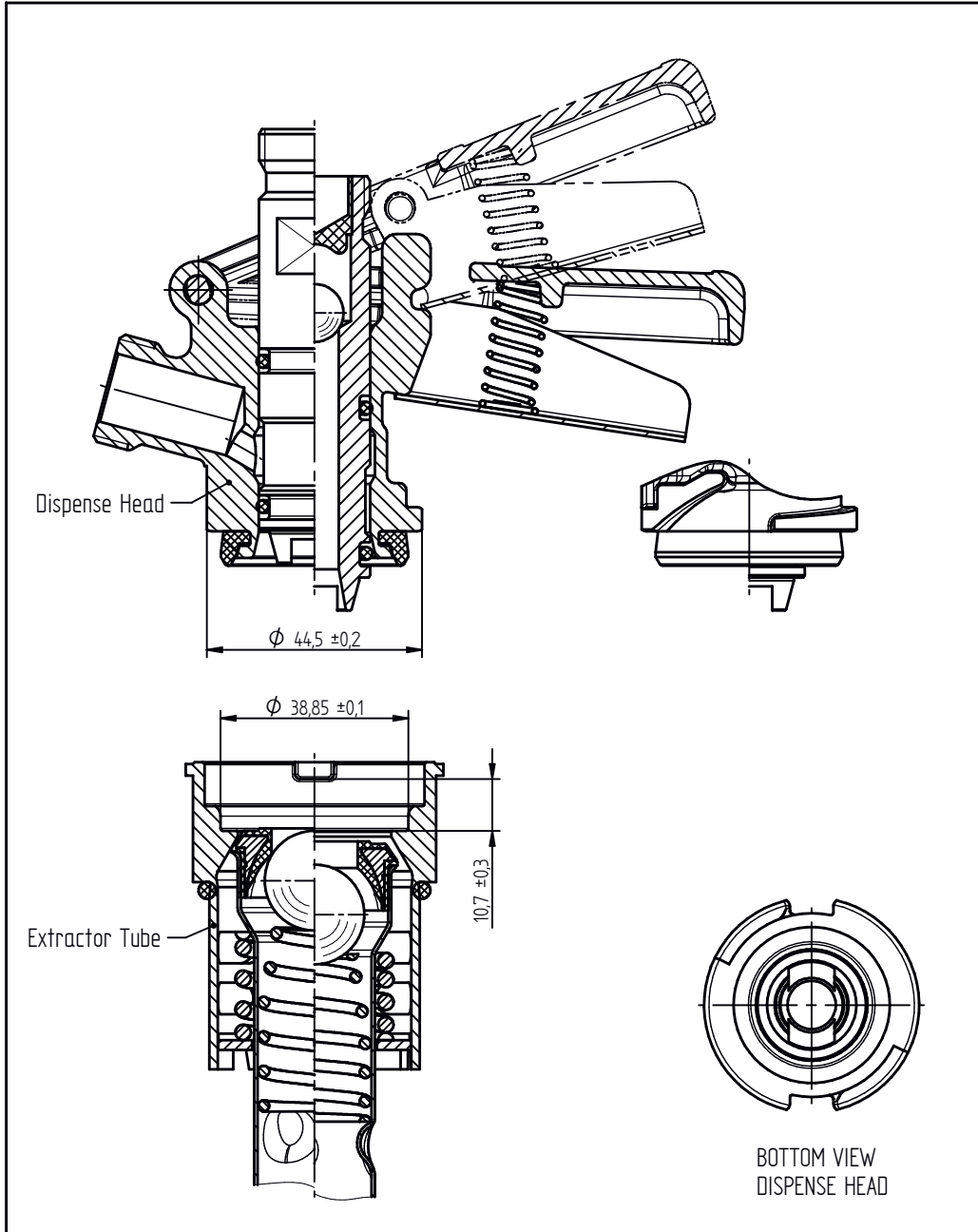
DSI Getrankearmaturen GmbH.  
 If in doubt, please ask.  
 Samples are required after each revision.

This drawing is the property of Dispense Systems International.  
 The information is confidential and should not be copied for  
 any other purpose without the prior written permission of

PRODUCT		REMARKS		ROUGHNESS	SCALE	WEIGHT VOLUME	
					MATERIAL		
		DATE	NAME	TITLE			
		DRAWN 17.11.2005	AH	Draft Type Connection System			
		APPR.					
		NORM					
		PROD. DEV.	DE				
				PROJ. METHOD	FORMAT	DRAWING NUMBER	SHEET
A	updated			15.02.2013	Kunze		A4
ALTERATIONS		DATE	NAME	ORIGIN	REPL.	REPL. BY	2 SHTS.




# CONNECTION

## EXTRACTOR TUBE ET-W-DB



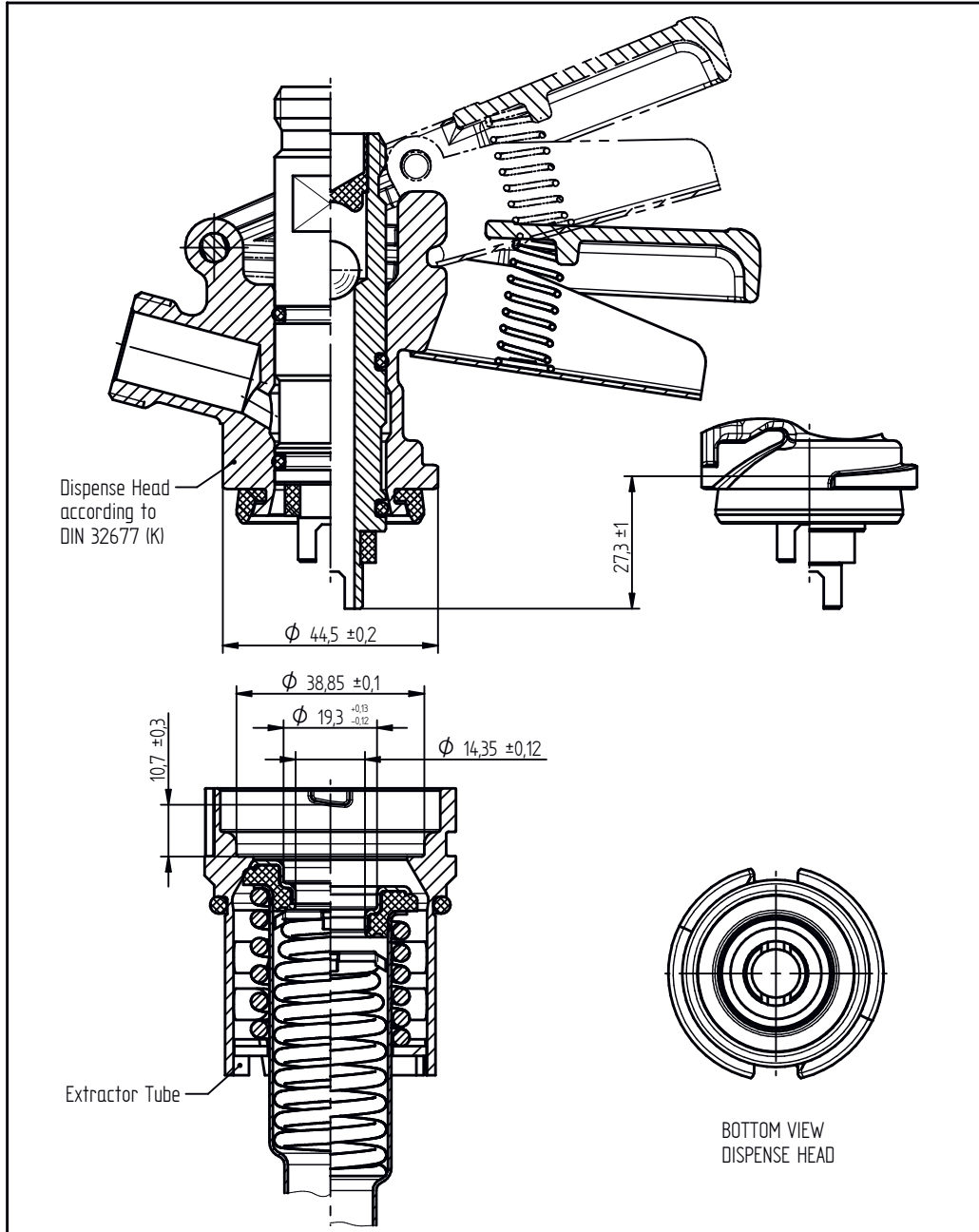
DSI Getrankearmaturen GmbH.  
 If in doubt, please ask.  
 Samples are required after each revision.

This drawing is the property of Dispense Systems International.  
 The information is confidential and should not be copied for  
 any other purpose without the prior written permission of

PRODUCT		REMARKS		ROUGHNESS	SCALE	WEIGHT VOLUME			
					MATERIAL				
			DATE	NAME	TITLE				
			DRAWN 17.11.2005	AH	Draft Type Connection System				
			APPR.						
			NORM						
			PROD. DEV.	DE					
						PROJ. METHOD	FORMAT	DRAWING NUMBER	SHEET
A updated		15.02.2013	Kunze				A4	D-185714	1
ALTERATIONS		DATE	NAME			ORIGIN	REPL.	REPL. BY	

# CONNECTION

## EXTRACTOR TUBE ET-W-B



DSI Getränkearmaturen GmbH.  
 If in doubt, please ask.  
 Samples are required after each revision.

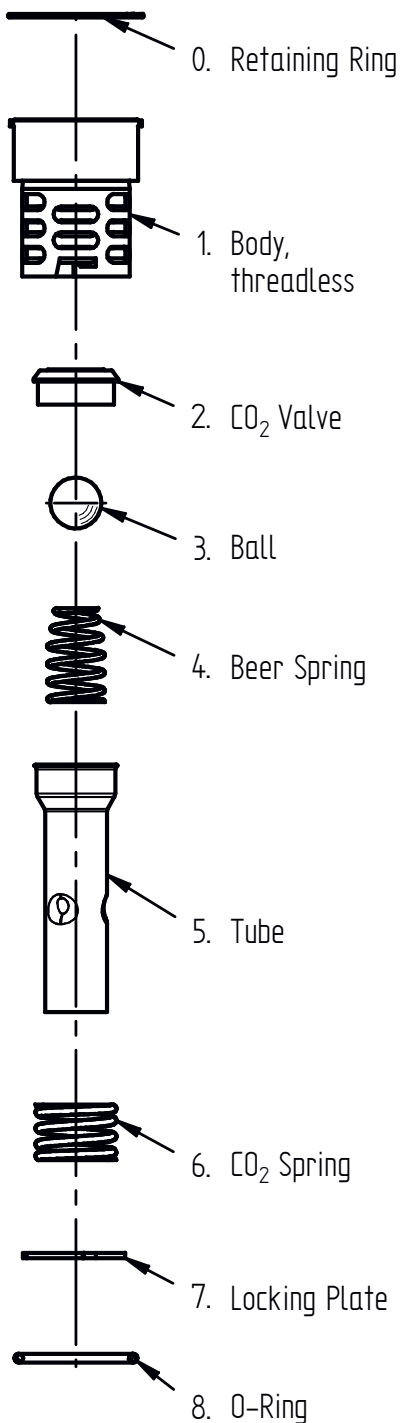
This drawing is the property of Dispense Systems International.  
 The information is confidential and should not be copied for  
 any other purpose without the prior written permission of

PRODUCT		REMARKS		ROUGHNESS	SCALE	WEIGHT VOLUME	
					MATERIAL		
		DATE	NAME	TITLE			
		DRAWN	20.02.2013	kunze	WB Connection System		
		APPR.					
		NORM					
		PROD. DEV.		DE			
				PROJ. METHOD	FORMAT	DRAWING NUMBER	SHEET
				REPL.		A4	D-910425
ALTERATIONS		DATE	NAME	ORIGIN	REPL. BY	2 SHTS.	

# SPARE PARTS TAPRITE

## EXTRACTOR TUBE ET-W-D PART NUMBERS

### 8. Spare parts Taprite



#### Order list for Taprite parts.

No.	Description	Part Number
0	Retaining ring	06-2058-00
2	CO <sub>2</sub> Valve	50-1125-00
3	Ball	47-0003-00
4	Beer Spring	47-0001-00
6	CO <sub>2</sub> Spring	47-0002-00
8	O-Ring	45-0017-00

All components are compatible with all other existing D-Type ball valve systems.





### Germany

DSI Getränkearmaturen GmbH  
Oberster Kamp 20  
59069 Hamm

Phone: +49(0)2385 772 100

Fax: +49(0)2385 772 249

[sales@dsi-group.net](mailto:sales@dsi-group.net)

[www.dispensegroup.com](http://www.dispensegroup.com)



### USA

Taprite  
3248 Northwestern Drive  
San Antonio, Texas 78238

Phone: +1(210)523 0800

Fax: +1(210)520 3035

[sales@taprite.com](mailto:sales@taprite.com)

[www.taprite.com](http://www.taprite.com)



### United Kingdom

DSI Service Centre U.K.  
c/o Pegler Yorkshire  
ST Catherine's Avenue  
Doncaster, South Yorkshire, DN4 8DF

Phone: +44(0)1302 560 190

Fax: +44(0)1302 767 608

[sales-uk@dsi-group.net](mailto:sales-uk@dsi-group.net)

